

K1



The K1's elegant and compact design can be applied in the most diverse interiors. It comprises a comprehensive series of luminaires with various light sources and extensive mounting accessories. The entire emergency lighting of your building can be achieved using one concept. A distinct appearance can be selected, as K1 offers the option of decorative end pieces.

K1 uses modern and environmentally-friendly technology. ETAP has developed new electronics that meet European standard EN 50172 and IEC 62034 for the EST and EST+ automatic self tests.



Decorative end piece



Square wall mounting, single-sided signage



Ceiling, lighting



Recessed, double-side signage



Ceiling mounting



Recessed lighting



Wall mounting

Processor for automatic self-test

To guarantee maximum safety and minimum maintenance all K1 luminaires are fitted with smart electronics for automatic self-tests. The powerful processor increases the reliability of the electronics. You have a choice of two models that meet IEC 62034 and EN 50172.

- EST (European Safety Test) carries out monthly automatic tests and annual duration tests with passed/fault indication using two LEDs;
- EST+ provides increased safety because of more frequent tests; carries out weekly automatic tests and quarterly duration tests. In addition to the EST functionalities EST+ has a useful differentiated error message with three easy to read indicator LEDs. The test button allows you to set the test at any moment of the day.

The indicator LEDs' position allows them to be read from any angle irrespective of the method of mounting.

Centralised monitoring

K1 luminaires can be included in the ETAP Safety Manager system, the PC based central monitoring system. All tests and maintenance are automatically registered in a logbook. This allows you to prove that your emergency lighting is regularly tested as required for certain applications in accordance with European Standard 50172.

Low-energy concept

K1 is low-energy thanks to the nickel metal hydride batteries (NiMH) with an extra energy-efficient charging process. One recharge period of a maximum of one hour a day suffices. The fact that the batteries are not overheated during the charging process significantly increases the life of the batteries. Also, the NiMH are more compact and don't contain any cadmium, making them more environmentally-friendly.



EST+: differentiated error messages



Environmentally-friendly NiMH batteries

K1 luminaires are designed for an optimal light treatment depending on the application: lighting or signage.

Light treatment

Lighting with wide angle distribution

Anti-panic and escape route lighting demand a wide angle distribution. The special design of the Fresnel lens takes care of this. The highly reflective material above the lamp guarantees maximum light output. You need less luminaires for the same distance. At a normal mounting height the luminaires can be up to 13 metres apart for an illuminance of 1 lux on the escape route. For anti-panic lighting one luminaire is enough to light an area of 11 by 10 metres to 0.5 lux.

Lighting with diffuse distribution

For wall mounting or small rooms a luminaire with diffuse lighting can be used. An extra opal film provides an even more unobtrusive view without lamp reflection.

Single-sided signage

Signage film, easily replaced

The pictogram, printed on a rigid film, is behind the evenly textured cover. The matt finish prevents distracting reflections making sure that the pictogram is well lit and easily recognisable. The film is very easy to place, remove and change, adding to the flexibility. It is firmly located in the cover it cannot slip and the image is always clear and focused.

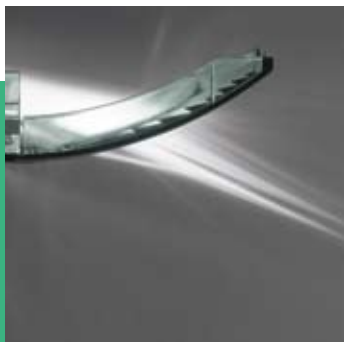
Sufficient light under the luminaire for signage

A light window under the pictogram provides 1 lux under the luminaire with a mounting height of 2.8 metres. The light makes a door handle or a fire extinguisher easy to see and it contributes to the escape route lighting.

Single and double-sided signage

Perfectly lit

In these models a special Fresnel lens provides a uniform and clear illumination of the sign and a light level of 5 lux on the floor with a mounting height of up to 4 metres. The plexiglass plate – hung on transparent hooks – swings out making it very sturdy and vandal-resistant. This pictogram is also easy to change.



Wide angle Fresnel



Diffuse light distributions



Film behind matt cover with light window



Both 6W and 11W fluorescent lamps can be used in K1. Within the same housing a light source can be selected to meet specific requirements.



Fluorescent lamp 6W



11W-TC-S-lamp

The right light source

Compact and efficient

The compact 6W fluorescent lamp is energy-efficient and has good colour rendering properties. This lamp can be used for maintained and non-maintained lighting and signage applications.

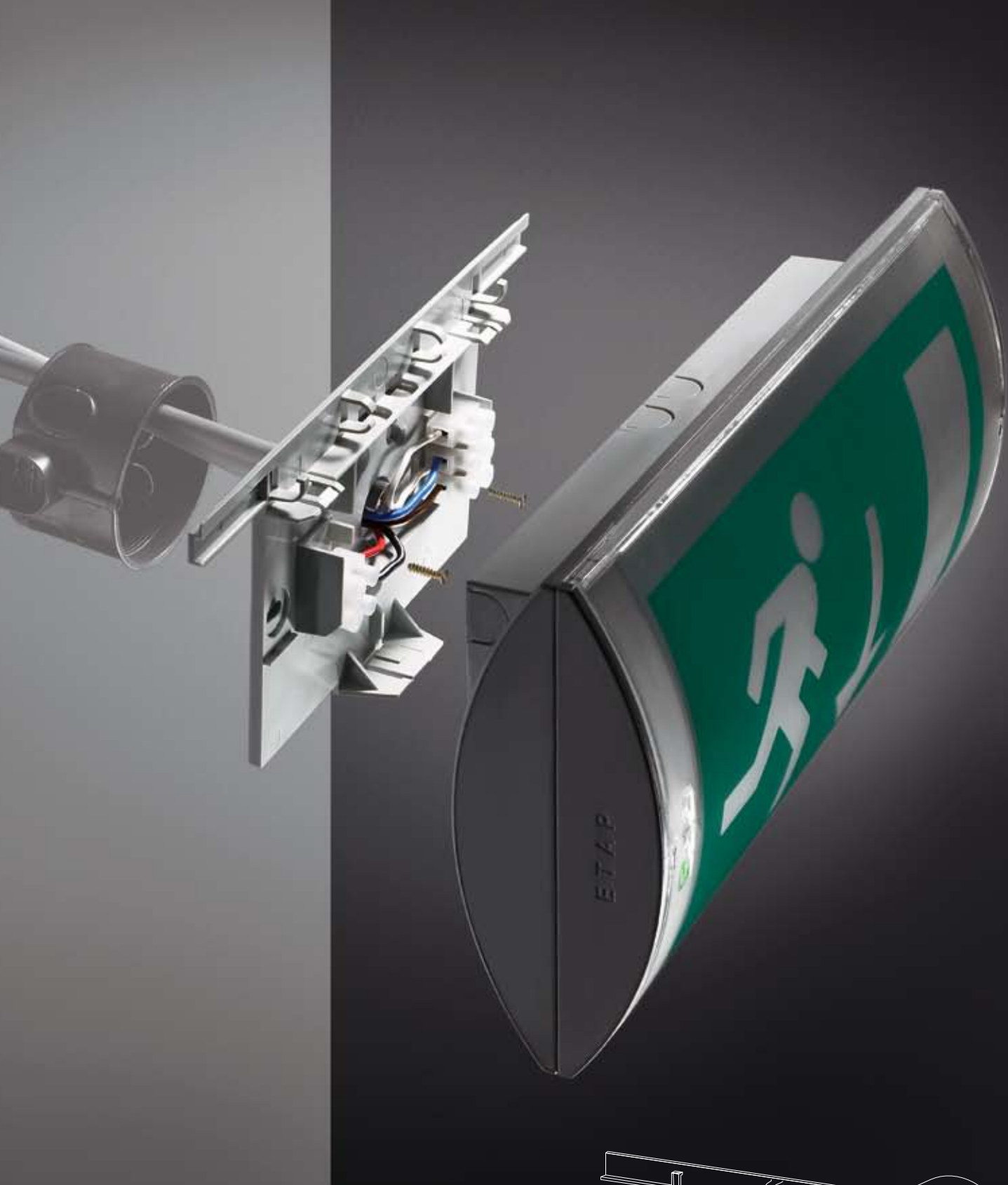
Higher lumen output

The 11W-TC-S-lamp is perfect if you require a higher lumen output for a non-maintained lighting application. This compact lamp has an extra high lumen output, an ideal solution for high ceilings.

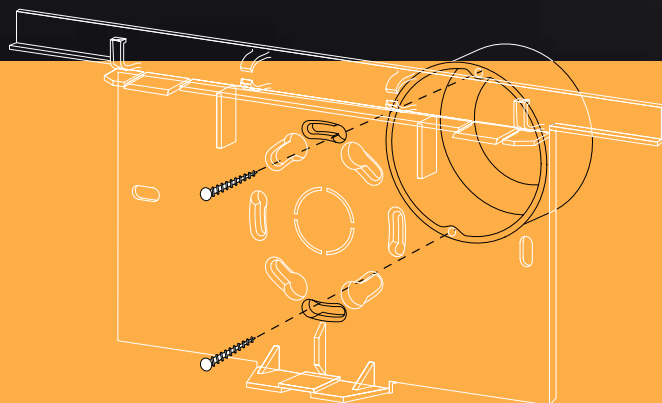


Narrow angle Fresnel





The mounting plate of K1 makes it easy to mount. The luminaire needs to be clicked on the mounting plate and does not require tools nor the opening of the luminaire. You will save up to 20 % on the installation time.



Easy to mount

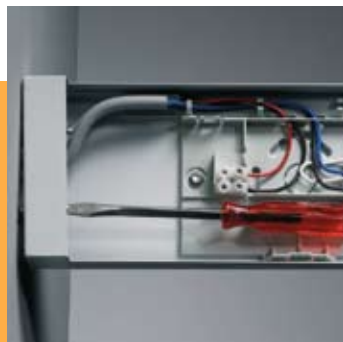
The mounting plate of K1 makes it easy to mount, both for surface-mounted and recessed wiring. In case of surface-mounted wiring the wiring can be entered from the top or the sides. In case of recessed wiring with mounting kits the mounting plate can be mounted through specific openings without drilling. After fixing the mounting plate, all you need to do is connect the wiring. Because K1 is insulation Class II, an earthing wire is not necessary. Finally, connect the battery and click the luminaire onto the mounting plate. This stage does not require tools nor the opening of the luminaire.

Mounting brackets for all applications

The special mounting brackets (recessed, right angle on the wall or rod) allow you to put the emergency lighting anywhere it is needed. Any unevenness in the wall is easily corrected with the adjustment system.



Mount bracket and connect wiring



Adjust for uneven walls



Click luminaire and it's ready

Unobtrusive safety

K1 can be mounted unobtrusively. The surface-mounted model offers many possibilities depending on the layout of the room. The decorative end pieces are standard in aluminium (RAL 9006) and white (RAL 9003), but any colour is available. ETAP gives 4 years guarantee on housing, electronics and batteries.

Automatic test and monitoring

All models are available as self-contained luminaires or for central emergency supply. Each self-contained K1 has an automatic self-test and a duration of 1 to 3 (option) hours.

K1 can also be incorporated in the ETAP Safety Manager system (ESM) for centralised monitoring and remote control.

Decorative end-pieces

Emergency lighting luminaires



Ceiling



Recessed ceiling



Aluminium RAL 9006



Right angle on the wall



White RAL 9003



Parallel wall mounting

Single-sided illuminated safety sign luminaires

Single and double-sided illuminated safety sign luminaires



Diffuse ceiling



Ceiling



Ceiling



Diffuse recessed



Wall mounting



Recessed ceiling



Diffuse wall mounting



Right angle on the wall



Right angle on the wall



Rod



Rod



Parallel wall mounting



Rod



K1

- Elegant and compact design
- Safe and environmentally-friendly
- Ingenious photometry
- Installation-friendly
- Comprehensive range
- IP 42

ETAP Lighting, U.K. Branch ■ Unit 6 ■ Windsor Business Centre ■ Vansittart Estate ■ Windsor ■ Berkshire SL4 1SE ■ UK
 Tel. +44 (0)1753-829970 ■ Fax +44 (0)1753-859208 ■ enquiries@etaplighting.com

International Lighting Systems as ■ Drammensveien 130 (Inngang Verkstedveien) ■ 0277 Oslo ■ Norway
 Tel. +47 (0)22 55 54 22 ■ Fax +47 (0)22 55 65 22 ■ firmapost@ils.no

ETAP Export Department ■ Antwerpsesteenweg 130 ■ B-2390 Malle ■ Belgium
 Tel. +32 (0)3 310 02 11 ■ Fax +32 (0)3 311 61 42 ■ export@etaplighting.com

www.etaplighting.com

